

**PLEASE CHECK WWW.MOLEX.COM FOR LATEST PART INFORMATION**

**Part Number:** [0510150800](#)  
**Status:** **Active**  
**Description:** 2.00mm (.079") Pitch Board-In Crimp Housing, Low Profile, 8 Circuits

**Documents:**

<a href="#">3D Model</a>	<a href="#">Product Specification PS-51015-002 (PDF)</a>
<a href="#">Drawing (PDF)</a>	<a href="#">RoHS Certificate of Compliance (PDF)</a>
<a href="#">Product Specification PS-51015-001 (PDF)</a>	

**Agency Certification**

UL E29179

**General**

Product Family	Crimp Housings
Series	<a href="#">51015</a>
Product Name	Board-In

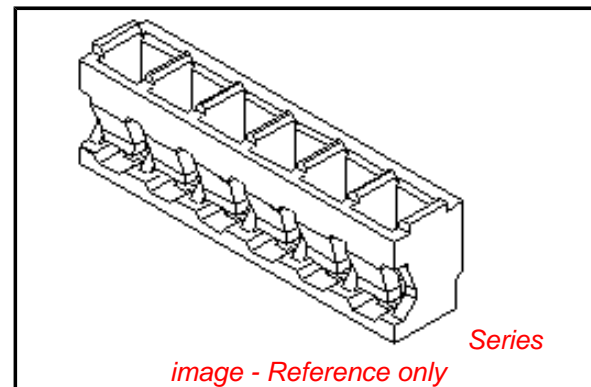
**Physical**

Circuits (maximum)	8
Color - Resin	Natural
Flammability	94V-0
Gender	Male
Glow-Wire Compliant	No
Material - Resin	Nylon
Number of Rows	1
Packaging Type	Bag
Panel Mount	No
Pitch - Mating Interface (in)	0.079 In
Pitch - Mating Interface (mm)	2.00 mm
Stackable	No
Temperature Range - Operating	-40°C to +105°C

**Material Info**

**Reference - Drawing Numbers**

Product Specification	PS-51015-001, PS-51015-002, RPS-51015-001, RPS-51015-003, RPS-51015-004, RPS-51015-006
Sales Drawing	SD-51015-**00



**EU RoHS**

**ELV and RoHS Compliant**  
**REACH SVHC Contains SVHC: No**  
**Halogen-Free Status**

**China RoHS**



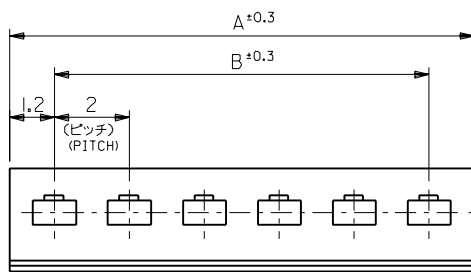
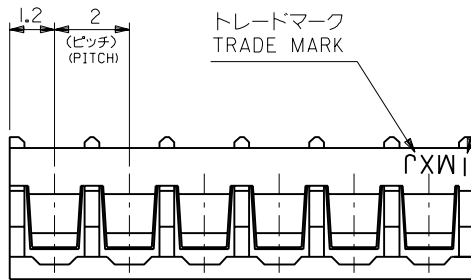
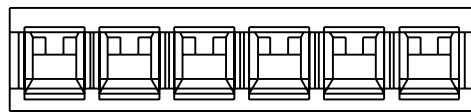
**Need more information on product environmental compliance?**

Email [productcompliance@molex.com](mailto:productcompliance@molex.com)  
 For a multiple part number RoHS Certificate of Compliance, [click here](#)

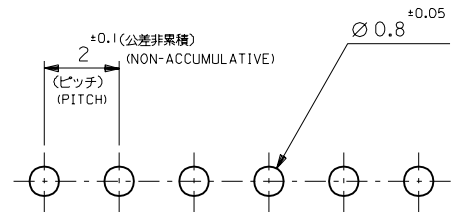
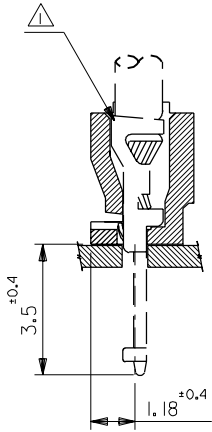
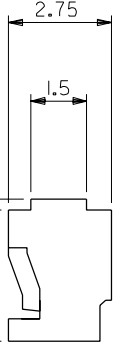
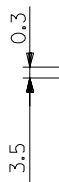
Please visit the [Contact Us](#) section for any non-product compliance questions.

**Search Parts in this Series**  
[51015Series](#)

**Use With**  
[50034](#)



回路番号  
CIRCUIT NO.



基板取付穴推奨寸法

(基板厚: t=1~1.6mm)  
RECOMMENDED PC BOARD  
HOLE DIMENSION  
(THICKNESS: t=1~1.6mm)

注記  
NOTE

△ 適合ターミナル: 50034-8\*00  
APPLICABLE TERMINAL: 50034-8\*00

28	30.4	51015-1500	15
26	28.4	-1400	14
24	26.4	-1300	13
22	24.4	-1200	12
20	22.4	-1100	11
18	20.4	-1000	10
16	18.4	-0900	9
14	16.4	-0800	8
12	14.4	-0700	7
10	12.4	-0600	6
8	10.4	-0500	5
6	8.4	-0400	4
4	6.4	-0300	3
2	4.4	51015-0200	2
B	A	ENG.NO.	種数 NO. OF CKT

角度 ANGLE	±3°				
30以上 OVER	+0.3				
10以上 30未満 OVER UNDER	+0.25				
10未満 UNDER	+0.2				
一般公差 GENERAL TOLERANCES		記号 LTR	変更内容 REVISION RECORD	DR. CHK.	日付 DATE
		B	再作図 REDRAWN	H.J.	'96/05/20
			変更内容 REVISION RECORD	M.F.	

材料 MATERIAL	ナイロン66、UL94V-0 NYLON66,UL94V-0
仕上げ FINISH	—
適用電線範囲 WIRE RANGE	—
被覆外径 INS. RANGE	—
DRAWN BY	'96/05/28 H.I.IJIMA
CHK'D BY	'96/05/28 M.FUKUSHIMA
APP'D BY	'96/05/28 M.ENOMOTO
尺度 SCALE	8 : 1

**molex** MOLEX-JAPAN CO.,LTD.  
日本モレックス株式会社

REVISE ONLY ON CAD SYSTEM

TITLE 名称  
2.0 BOARD  
IN CONN. HSG.

DWG. NO. SD-51015-\*\*-00

REV B